

# Thiele Master 3500 High Level Palletizer



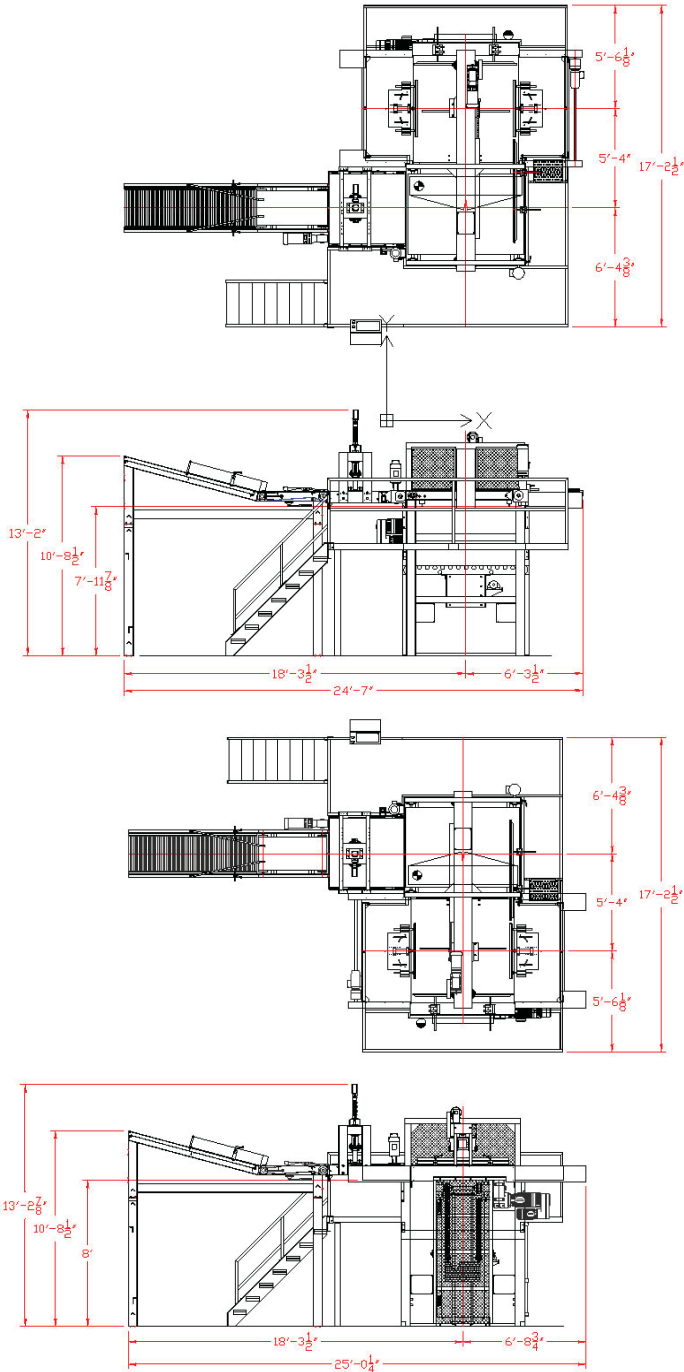
## Features

- Automatic bag layering increases production speed
- Servo-pusher option increases speed
- Patented layer squaring and compression system maximizes full-pallet load stability and appearance
- Allen-Bradley programmable controller and color touchscreen provides safe and easy operation
- Variable frequency drive (VFD) on pallet lift conveyor
- 3/4 in. thick bi-directional stripper plates provide more stable pallet load

# Thiele Master 3500 High Level Palletizer

The Thiele Master 3500 High Level Palletizing System features a high-speed pusher motor, state-of-the-art mechanical and electrical components, and programming to automatically palletize filled bags or bales.

The modular design, including accumulation/pacing conveyor and pop-up turning device uses floor space efficiently while allowing flexibility in your layout.



## Specifications

### Production Speed

Up to 36 bags per minute

### Dimensions

Length	6 ft. 9 in. (2057.4 mm)
Width	6 ft. 0.5 in. (1841.5 mm)
Height	79 in. (2006 mm) max floor to bag top
Adjustable	34.5 in. to 65.5 in. (876 mm - 1663 mm)

### Power Requirements

Input Power	480 V, 3 phase, 60 Hz
Control Circuit	24 VDC
Current Draw	480 volts (80 amps)

### Air Requirements

Operating Pressure	80 psi (551 kPa)
Line Pressure	90 psi (620 kPa)
Air Use/Cycle	11 cubic ft. per minute

### Shipping Weight

13,600 lbs. (6168.9 kg)

### Maximum Load Size

4 ft. 6 in. x 4 ft. (1371.6 mm x 1219.2 mm)

### Maximum Load Weight

4000 lbs. (1814 kg)

### Maximum Load Height

Up to 7 ft. 5 in. (2260.6 mm)

Hayssen | Hudson-Sharp | Rose Foregrove | Sandiacre | Schib | Simonato | SYMACH | Thiele