

# Schib CO 140 INT



## Features

- Intermittent motion HFFS technology
- Continuous motion version available on demand
- Suited for a wide range of food and non-food products
- Ideal for the non-food industry, it can run a variety of items including tall, long, and heavy products as well as product kits
- Fast, repeatable changeovers will allow short production runs and/or frequent product changeovers
- 550 mm film width (900, 1200 or 1400 mm as an option)
- Greater labor productivity, greater machine efficiency
- Lower cost per bag produced
- Low maintenance, reduced parts inventory
- Ready for integration into packaging lines interfacing with other automated equipment

# Schib CO 140 INT

The Schib CO 140INT Flow Wrapper featuring Intermittent Motion HFFS Technology is extremely flexible and dependable. The machine is suited for a wide range of food and non-food products.

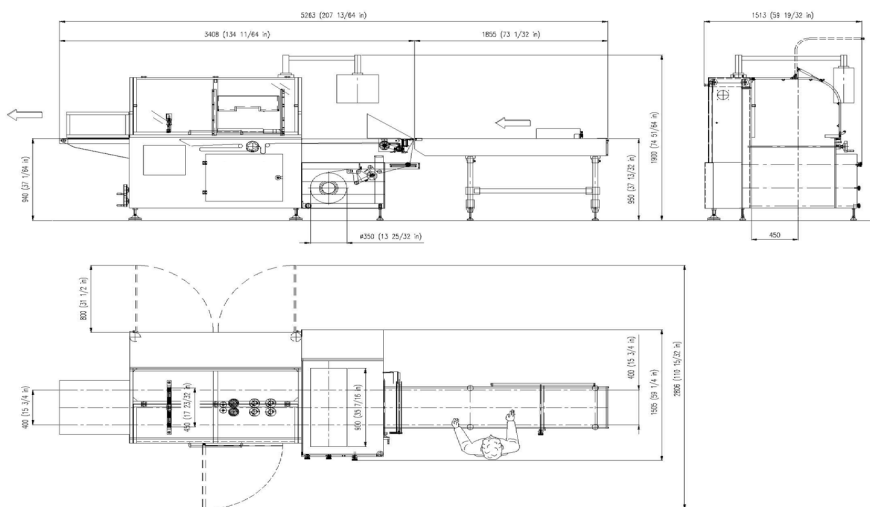
It especially performs in the non-food industry, as it can run a variety of items including tall, long, and heavy products as well as product kits. Automotive, hardware and electrical components, plastic, pharma/medical items are just some of the major applications.

Several sealing systems are available for the most diverse film structures: OPP, PP laminates, LDPE, HDPE, LDPE/HDPE foam laminates, LDPE "bubble wrap", and shrink materials including Polyolefin-type.

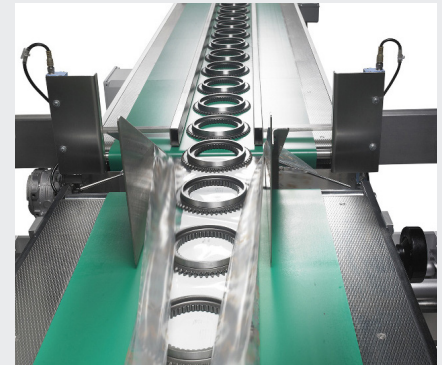
Production rate up to 25 wraps/minute, depending on product length and weight.

A Continuous Motion version is also available on demand, running up to 40 wraps/minute, depending on product length and weight.

| Feature  | Standard   | Optional  |
|--|--|---|
| Min./Max. product dimensions   | Length 50 / 1500 mm<br>Width 5 / 200 mm<br>Height 1 / 120 mm | 10000 mm on request<br>Up to 400 mm<br>Up to 200 mm   |
| Performance  | 25 ppm   | 40 ppm  |
| Film roll width  | 550 mm   | 900 / 1200 / 1400 mm  |
| Film roll max. ext. dia  | 350 mm   |   |
| Sealing head   | Guillotine-type  | Box-motion  |
| In-feed conveyor useful length                                       | 1500 mm  | On request  |
| Automatic film splicer   | No   | Yes   |
| HMI control panel  | 7" color touch-screen  | 10" color touch-screen  |
| Program storage  | 49 programs  | 99 programs   |
| Diagnostics  | Yes  |   |
| Machine finishing  | Painted RAL 9007   | Stainless steel   |
| No product - no bag  | Yes  |   |
| Wrapping materials   | Heat sealable OPP -<br>BOPP - COEX -<br>Laminate             | LDPE, HDPE, LDPE/HDPE<br>foam laminates, LDPE "bubble<br>wrap", and shrink materials<br>including Polyolefin-type |
| Installed / absorbed power   | 3 / 1,5 kW   |   |
| Weight   | 1200 kg  |   |
| Feeding system   | Manual   | Automatic   |
| Machine dimensions   | 5300 x 1500 x 1900 mm  |   |
| We reserve the right to make technical changes without prior notice. |  |   |



Guillotine-type or box-motion cross sealing system



Heavy-duty lower carrying belts



Bottom film feeding

BW Flexible Systems  
225 Spartangreen Blvd.  
Duncan | SC | 29334  
UNITED STATES  
t. +1 (864) 486 4000  
[bwflexiblesystems.com](http://bwflexiblesystems.com)

BW Flexible Systems UK Ltd.  
101 Lilac Grove | Nottingham | NG9 1PF  
UNITED KINGDOM  
t. +44 (0) 115 967 8787  
[bwflexiblesystems.com](http://bwflexiblesystems.com)

Hayssen Flexible Systems S.r.l.  
Via Trieste, 53 | Mestrino (PD) | 35035  
ITALY  
t. +39 049 9006511  
[hayssen.com](http://hayssen.com)

Schib Packaging S.r.l.  
Viale del Lavoro, 7/9 A  
Monte di Malo (VI) | 36030  
ITALY  
t. +39 0445 602300  
[schib.it](http://schib.it)

Hayssen | Hudson-Sharp | Rose Forgrove | Sandiacre | Schib | Simionato | Symach | Thiele

BW Flexible Systems is a global manufacturer of packaging systems that fill and bag thousands of food and non-food products. Our packaging systems are designed and manufactured to maximize the efficiency and lifetime value of our customers' packaging lines. Our range of machinery includes form-fill-seal, feeding, bag filling and sealing, pouch-making equipment, flow-wrap, reclosable packaging solutions, palletizing, stretch-wrapping and more. For more information, go to [bwflexiblesystems.com](http://bwflexiblesystems.com)

